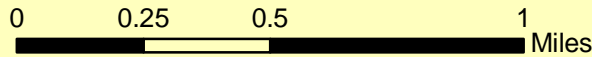
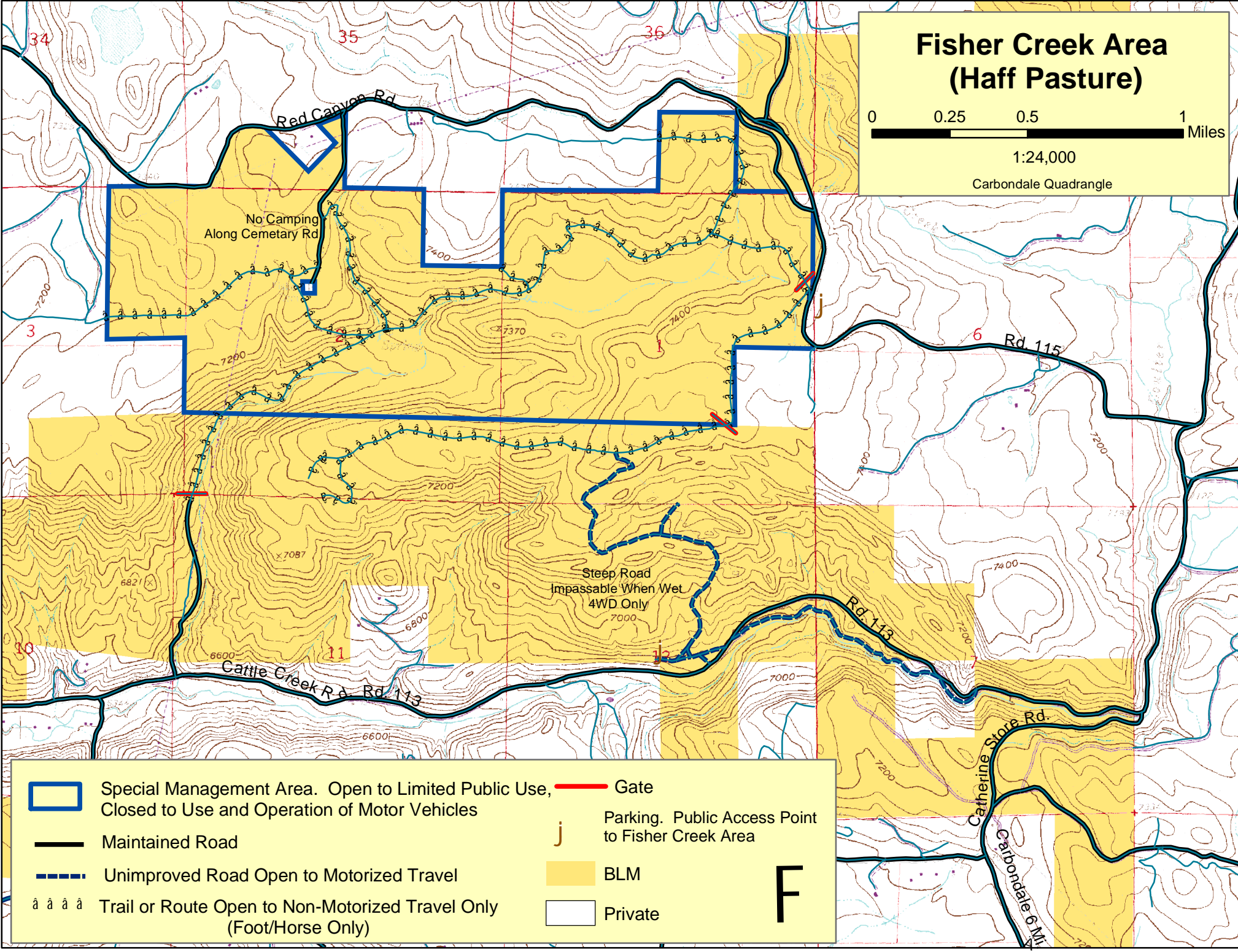


Fisher Creek Area (Haff Pasture)



1:24,000

Carbondale Quadrangle



- Special Management Area. Open to Limited Public Use, Closed to Use and Operation of Motor Vehicles
- Maintained Road
- Unimproved Road Open to Motorized Travel
- Trail or Route Open to Non-Motorized Travel Only (Foot/Horse Only)
- Gate
- j Parking. Public Access Point to Fisher Creek Area
- BLM
- Private

F