

The Town of
SNOWMASS Village
PARKS RECREATION & TRAILS
TRAIL MAP
SUMMER & FALL 2015

WELCOME!

We are each stewards of this land, charged to cherish, respect and protect it. Enjoy your visit! Please treat these trails and this special place responsibly.

Travel on Open Trails Only Respect all trail and road closures.

Leave No Trace Be sensitive to the environment. Please don't cut switchbacks. Pack out trash.

Stay in Control Be aware of surroundings. Share the trail and yield to others. Keep speed in check.

Respect Wildlife Keep your distance and never feed, startle or provoke wildlife.

Dogs Leashes are required at all times. And please clean up after your pet!

Share the Trail Bikers must yield to both hikers and horses. Hikers must yield to horses.

Trail Maintenance Service vehicles and/or equipment may occasionally be encountered.

MOUNTAIN SAFETY TIPS

Plan Ahead: Carry food and water, extra clothing and sunscreen. Know your equipment, your ability and the area you are traveling. Tell someone where you are going and when you plan to return.

High Altitude: Be aware of the health effects of diminished oxygen levels. Weather conditions can change rapidly - be prepared.

IN CASE OF EMERGENCY

Dial 911 on your cell phone
or dial (970) 923-0531 to reach the
Snowmass Mountain Ranger Station

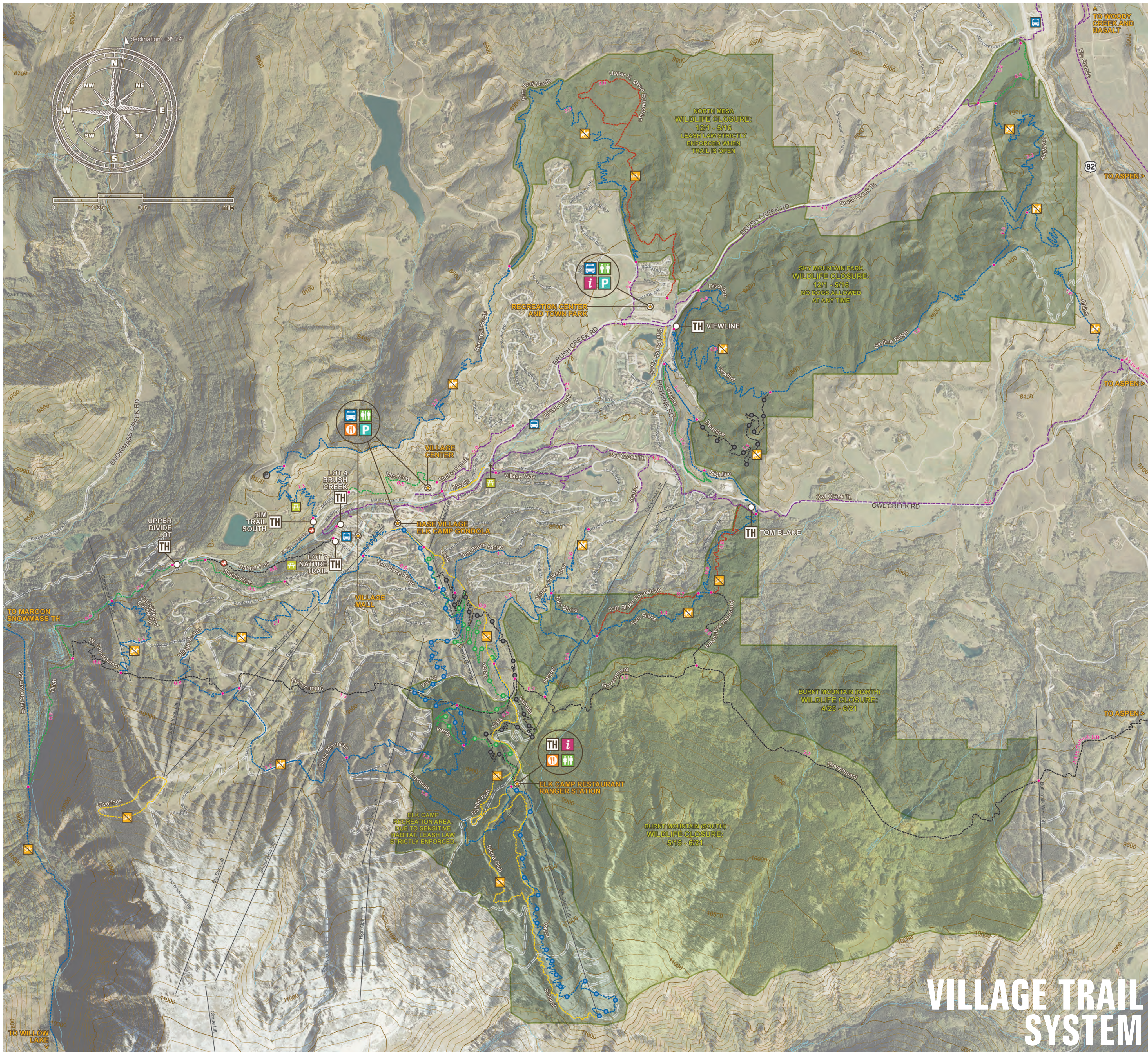


**FREE VILLAGE-WIDE SHUTTLE
ON DEMAND:** Please call 970-923-3500
BIKE TRANSPORT: During daylight hours



TOWN TRAIL ORDINANCES: Camping is not permitted. Fires are not permitted. No motorized vehicles, including e-bikes. Helmets required. Child bike seat attachments and trailers are not permitted on natural surface trails. No on-street parking — use trailhead lots or Town Park. Respect all trail and area closures for wildlife sensitivity. Dogs must be leashed at all times.

For more info: www.snowmassrecreation.com



LEGEND

- BEGINNER TRAIL
- INTERMEDIATE TRAIL
- ADVANCED TRAIL
- BEGINNER DH TRAIL
DOWNHILL RULES APPLY*
- INTERMEDIATE DH TRAIL
DOWNHILL RULES APPLY*
- ADVANCED DH TRAIL
DOWNHILL RULES APPLY*
- PAVED TRAIL
- HIKING-ONLY TRAIL
- EQUESTRIAN-ONLY TRAIL
- RIVER / CREEK
- TH TRAILHEAD
- P PARKING
- BUS STOP
- RESTROOM
- i INFORMATION
- FOOD & SHOPS
- PICNIC
- NO DOGS
- NO BIKES
- NO HIKING
- NO HORSES
- ACES NATURE HIKES
NO MTB 10am to 3pm

DOWNHILL TRAIL RULES



SHARE THE TRAIL! WHAT TO DO WHEN:

YOU ENCOUNTER A HIKER >
Cyclists should yield to all other trail users. Make enough sound to avoid surprises. When approaching from ahead or behind, make your presence known, then slowly pass.

YOU ENCOUNTER A HORSE >
If passing from behind, make your presence known and ask to pass. Pull off the trail when meeting head-on. Horses can "spook", so avoid making sudden movements or loud noises.

YOU ENCOUNTER A BIKER >
Downhill riders should yield to uphill riders. Be considerate of novices.

For interactive mobile mapping:
www.pitkinoutside.org

For more info about Village parks and trails:
www.snowmassrecreation.com
or call (970) 922-2240



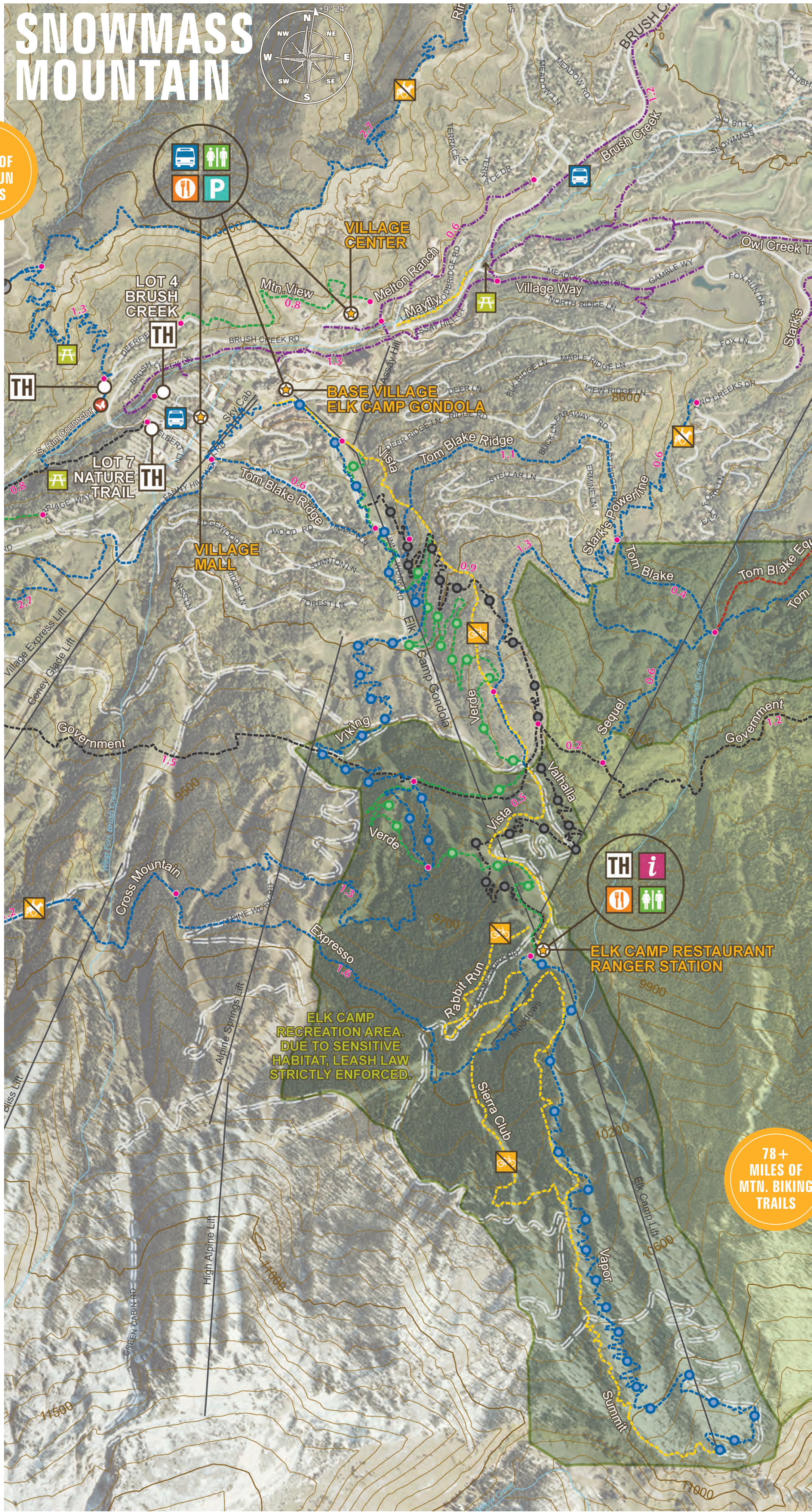
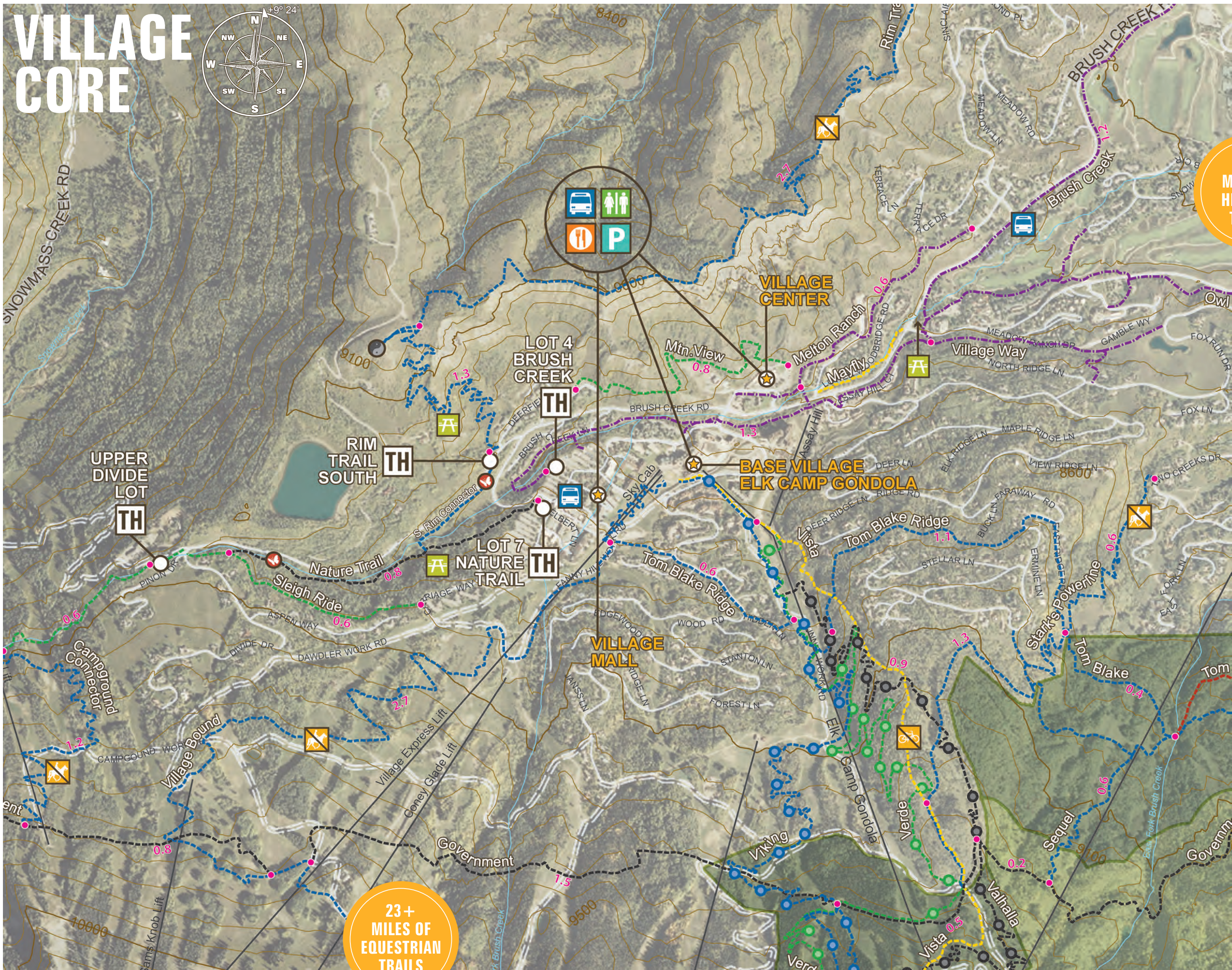
BIKE PARK Lift served mountain biking is offered daily 6/20 thru 9/7, 2015 and weekends thru 9/27. The Elk Camp Gondola runs from 10am until 4pm. DAILY LIFT PASS: \$41 / FULL SUMMER PASS: \$199

(800) 525-6200 www.aspensnowmass.com



WILDLIFE CLOSURES
NORTH MESA: Closed from 12/1 to 5/16 • WHEN OPEN, LEASH LAW STRICTLY ENFORCED
SKY MOUNTAIN PARK: Closed from 12/1 to 5/16 • NO DOGS ALLOWED AT ANY TIME
BURNT MOUNTAIN (NORTH): Closed from 4/25 to 6/21 • WHEN OPEN, DOGS ON LEASH ALLOWED
BURNT MOUNTAIN (SOUTH): Closed from 5/15 to 6/21 • WHEN OPEN, DOGS ON LEASH ALLOWED
PLEASE RESPECT WILDLIFE SENSITIVITY. WILDLIFE CAMERAS ARE IN USE ON ALL TRAILS.

SNOWMASS VILLAGE RECREATION CENTER: (970) 922-2240 | SNOWMASS MOUNTAIN GENERAL INFORMATION: (800) 525-6200



Surrounded by the 2.3 million acres of the White River National Forest, the options in and around Snowmass are truly endless. Directly accessed from the Village, recreationalists can head out to explore over 90 miles of trails. ✱ A mountain biker's heaven, whether you're looking for the gravity-defying rush of a world-class downhill trail or a gentle single track through meadows bursting with wildflowers. ✱

Hikers and runners will find everything from short morning jaunts to multi-day trips all while enjoying exquisite terrain and breathtaking views. ✱ Equestrians too will find their paradise while exploring the serene beauty of aspen forests and lush meadows, whether exploring on their own or with a guided trip. ✱ For more information and to find expeditions and outfitters, please visit www.gosnowmass.com.



MOUNTAIN BIKE

ADVANCED Looking for a massive ride? Experience some of Colorado's best 22 miles of singletrack as you circumvent the Snowmass Village valley via a variety of trail styles. Begin at Town Park and take: Viewline>Deadline>Highline>Tom Blake>Starks Powerline>Government>Ditch>Sleigh>Nature>South Rim Connector>Rim Trail South>Rim Trail North>end back at Town Park. *closed to bikes 10am-3pm

INTERMEDIATE Enjoy a 12 mile loop of beautiful 360° views and flowy, non-technical, buff trails. Begin at Town Park and take: Brush Creek (paved)>Ditchline>Viewline>Skyline>Airline>Owl Creek Paved Trail>Highline>Viewline>Brush Creek (paved)>end back at Town Park.

BEGINNER/INTERMEDIATE A great 4.25 mile trail loop experience for the physically fit, beginner level rider. Begin with an aerobically challenging climb and end on rolling, buttery smooth, sinuous singletrack, shaded by dense aspen groves. Begin at Tom Blake Trailhead and take: Owl Creek (paved)>Stark's (paved)>Two Creeks Drive (road)>Stark's Powerline>Tom Blake>end back at Tom Blake Trailhead.

BEGINNER This flat, shaded 2 mile round-trip is ideal for the first-time mountain biker. As a bonus, the turnaround site offers a fantastic view of the Maroon Bells Snowmass Wilderness Area. Begin at the Upper Divide Lot Trailhead and do an out and back to the Bench/Overlook site on the Ditch Trail.



HIKE / RUN

ALL LEVELS Hit the 2 mile Vista Trail and hike till your heart is content! This hiking-only trail starts near the bottom of the Elk Camp Gondola and traverses up the mountain through lush aspen groves to the Elk Camp Restaurant. If that's not enough, continue up the mountain on the Sierra Club and Summit Trails (also hiking-only) which lead to the summit and huge views of Elk Mountain Range.



For interactive mobile mapping:
www.pitkinoutside.org

For more trail information:
www.snowmassrecreation.com



HORSEBACK

ALL LEVELS The Upper North Mesa Equestrian Trail is a great, 2-hour horseback ride with breathtaking, 360° degree views of Snowmass Village, Aspen, and the surrounding Elk and Gore Mountain Ranges.

Guided Horseback rides are available through Snowmass Creek Outfitters. To reserve a guided ride, visit www.snowmasscreekoutfitters.com.



NORTH MESA: Closed from 12/1 to 5/16*
SKY MOUNTAIN PARK: Closed from 12/1 to 5/16**
BURNT MOUNTAIN (north): Closed from 4/25 to 6/21
BURNT MOUNTAIN (south): Closed from 5/15 to 6/21
**When open, leash law strictly enforced.
**No dogs allowed at any time. PLEASE RESPECT!